

stayCONNECTED

E-WEEKLY June 20, 2023

Volume 15

BETHLEHEM LUTHERAN CHURCH - ELCA

SERVICES:

Sundays at 10:00 AM

Join us for traditional worship on Sunday mornings. Contemporary Christian Worship services are on the fourth Sunday of the month.

Choir practices 1st & 3rd Sundays at 8:40 AM

Wednesday, June 14th 6:30^{PM}

CONTEMPORARY WORSHIP SERVICE

Join us for **Soup Supper at 5:30pm** and follow up with an exciting praise and worship service. Music provided by our very own "Average Worship Band."

ONLINE SERVICE

www.sharingchrist.org

Watch LIVE during our Sunday services via YouTube or Facebook (Link below):

<https://www.youtube.com/>

[@bethlehemlutheranchurch7397/streams](https://www.youtube.com/@bethlehemlutheranchurch7397/streams)



SOCIAL MEDIA

[https://www.facebook.com/groups/
www.sharingchrist.org](https://www.facebook.com/groups/www.sharingchrist.org)

NEED TO CATCH UP?

Watch all messages on our website at any time. All messages are archived for viewing.

GIVING



We appreciate your giving. Did you know that you can also give online?

Go to our website and click on the giving tab on our homepage. You can

also stop by and drop your offering in the offering box in the lower entryway.

WORSHIP NOTES

SUNDAY JUNE 25, 2023

THE FOURTH SUNDAY AFTER PENTECOST 10:00 AM CONTEMPORARY SERVICE

Join us as we celebrate the season of Pentecost with the stories of Jesus demonstrating God's mercy and power through miracles. Jonathan Rova will preside and the "Not So Average" Average Worship Band will provide great praise music.

IN-PERSON & ONLINE EVENTS

TEXT STUDY

Day: Wednesdays at 12:30 PM

An informal meeting to discuss the scripture lessons for the upcoming Sunday which ties them together and gives you time to simmer in your heart for the week. We welcome everyone. Shelby Anderson can give you more information by contacting her at 218.387.2698.

BIBLE STUDY

Day: Thursdays at 8:00 AM

Mike Chmelik leads these weekly bible studies in the library and via Zoom. Any "man" is welcome to join this study.

QUILTING

Day: Thursdays at 9:00 AM

Each week a faithful crew (men and women) meet to put together quilts. Anyone is welcome to join weekly or just occasionally. Any or no skill level is required. This group produces over 200 quilts per year, some are sold but most are donated to those in need.

Please communicate prayer & praise items to:

blc@boreal.org or 218-387-2227. If you have photos from a recent trip or comments to share regarding Bethlehem connections, please forward to blc@boreal.org. Remember to send us pictures of your kids going to camp.

THIS WEEK AT BETHLEHEM

Wed. June 21 12:30 PM Text Study

Thurs. June 22 8:00 AM Bible Study
9:00 AM Quilting

Sun. June 25 10:00 AM Contemporary Service
with Jonathan Rova
And the 'Not So Average'
Average Worship Band

Mon. June 26 1:30 PM Jazz Band Practice

Wed. June 28 12:30 PM Text Study
6:30 PM Jazz Band Practice

"I wanted to THANK EVERYONE for helping at B.J. Muus Memorial on Saturday."

A personal message.

"I heard many persons were working until 7PM and later."

Thanks, Gwen Lenz



WILLIAM STRAND HAS GOOD NEWS!

HE HAS ACCEPTED HIS FIRST CALL, A TWO POINT PARISH IN SOUTH CAROLINA.

WILLIAM WILL BE ORDAINED IN HIS HOME CHURCH, MESSIAH LUTHERAN IN MADISON, ALABAMA, ON JULY 10TH AT 6:00 PM.

WILLIAM WILL SEND US THE LIVE STREAM LINK.



New Church Directory!

Before our new pastor arrives, we would like to put together a new Church Directory. Please provide a current family photo along with your address, email addresses, phone (land and cell) numbers, etc. John & Laura Muus will be available with their cameras on Sunday to get your pictures. Thanks! Pictures due no later than 7/2/23

First & Second Thrift Store will be opening next month in the Birchbark building, and we'll be ready to accept donations starting Wednesday, June 21st from 10am to 4pm every day except Sunday through the end of June.

Thank you for holding your donations. We expect to be deluged, and that will make us very happy. If possible, please bring your donations to the south side door on the alley between Birchbark and Joynes.

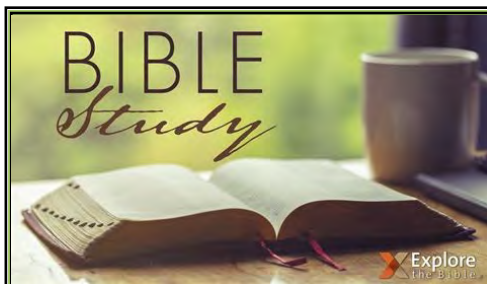
Prayer Requests

For Healing:

Jim Daugherty,
Lisa Bloomquist,
Terry Backlund,
Barbara Erickson,
Char Anderson,
Vera Finn,
Paulina Backstrom,
Lynn Schulte,
Bruce Johnson,
Eleanor Waha,
Rhonda Schulte,
Pastor Bob Stoskopf,
Les Donek,
Hank Ferland,
Carly Hawkinson-Shom;
Elsa Sorensen,
Emi Heikkinen,
Jesse Derscheid, and
Mike Smith

**This week we lift up
These church
members and
friends:**

Joan Abrahamson
Sally & Leif Arntsen
Linda Johnson
Roger MacDonald
Pearl Muus

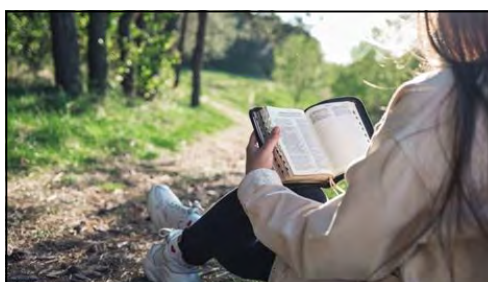


Readings & Psalm For June 25, 2023

Jeremiah 20:7-13
*The prophet must
speak despite
opposition*

Psalm 69:7-18
*Answer me, O LORD,
for your love is kind.*

Romans 6:1b-11
*Buried and raised with
Christ by baptism*
Matthew 10:24-39
*The cost of
discipleship*



BETHLEHEM
LUTHERAN CHURCH
IS PLEASED TO
ANNOUNCE:

CONCORDIA COLLEGE CONGREGATIONAL SCHOLARSHIP PROGRAM



AVAILABLE TO ANY
BETHLEHEM MEMBER
ATTENDING
CONCORDIA COLLEGE
IN MOORHEAD, MN
\$1000/STUDENT/YEAR
(UP TO 4 YEARS!)

APPLY NOW!

<https://www.sharingchrist.org/forms>

Contact the office for more details. Look for article in our July Bethlehem Star newsletter.

Mission Of the Month

Lutheran World Relief

The Church in Society committee has chosen to support **Lutheran World Relief** as our June Mission of the Month. Founded by U.S. Lutherans in 1945 in response to global needs post WWII, LWR has been working in countries all over the world ever since. LWR works to end poverty, suffering, and injustice by helping communities develop productive, stable economies, and by responding to natural disasters and humanitarian crisis. We invite you to look up lwr.org to read about some of the LWR ministries happening around the globe.

*Lutheran World Relief saves and improves lives
in the poorest parts of the world.*

We will persist until your love reaches every neighbor.

In Peace, Sue Anderson on behalf of the Church in Society Committee

June Member Activity

Often, when natural disasters strike or when war drives families from their homes, our hearts ache with compassion, but we don't know how to help. Making **Lutheran World Relief Kits** is a simple, fun and tangible way to offer comfort to those suffering and express love to our neighbors in need.

LWR Kits are specifically designed to help people coping with poverty, disaster, conflict and more. Whether a kit helps someone to maintain good hygiene, care well for a newborn baby, keep education going during a crisis or learn a new vocation, LWR Kits provide dignity and hope in the direst situations.

MEMBER CHALLENGE

Make a kit or two and bring your kits to church. There are instruction sheets and some left over materials from previous kit-making service projects. We will get them to LWR.

Make LWR kits: <https://lwr.org/kits>

Family Celebrations

Please send us your news to share. Whether it is a new baby, a milestone birthday/anniversary, a graduation, a new job, family vacations/visits. We long to make the connections with members. Covid sure robbed us of our celebrations together, and we'd like to pick up on sharing the joy, and life's moments when you need your church to surround you.

LWR Kits: Four ways to help:



#1 School Kits

Equip a child with the supplies they need to keep learning even in a crisis.

#2 Baby Care Kits

Help a baby get off to a good start in life with basic baby care supplies.



#3 Personal Care Kits

Provide much-needed self-care and critical germ fighting tools.

#4 Donate to the Kit Shipping Fund

Help ensure LWR has the funds needed to deliver your kits throughout the world

Summer Matching Gift Challenge:

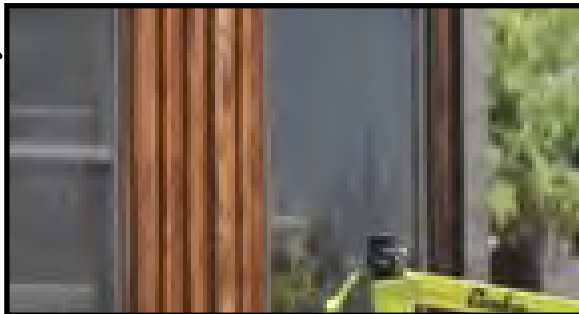
Every \$1 you give becomes \$2

Rush your gift before June 30: lwr.org

Church Picnic, June 11, 2023



**Fun
Food**



**F
E
L
L
O
W
S
H
I
P**



**Teacher
Appreciation,
Confirmation,
Welcome Summer,
& Farewell to the
Jacobsen's.**

**Next picnic: July 16th
Welcome Konop's
Ice Cream Social!**